



Virginia Healthcare Workforce Briefs

Indicators from the Bureau of Labor Statistics'
Current Employment Statistics Survey
Series 2: Regional & Sectoral Employment

Series 2, Issue 136

July 2023

Inside this Brief:

Regional Employment	2
Regional Employment Growth	2
Subsector Employment	3
Subsector Employment Growth	4
Region Map	5
About the Data	6

Highlights

- ◆ Data in this series are not seasonally adjusted and exhibit short-term volatility from fluctuations in holidays, weekends, weather and other seasonal factors. Estimates for the most recent month are preliminary.
- ◆ Northern Virginia's Health Care & Social Assistance (HC&SA) sector created 2,700 new jobs in June, which translates into an impressive 23.9% annualized growth rate. At the same time, the Rest of Virginia enjoyed its third consecutive month of positive HC&SA employment growth after having produced 700 new HC&SA jobs in June. On the other hand, Richmond's HC&SA sector lost 1,900 jobs in June, while Hampton Roads saw HC&SA employment decline by 500 during the month.
- ◆ Ambulatory Health Care Services created 1,600 new jobs in June. With this gain, Ambulatory Health Care Services have now increased employment in each of the past five months. Meanwhile, Hospitals increased employment by 900 in June, which translates into a 10.2% annualized growth rate. As for Social Assistance, this HC&SA subsector lost 1,400 jobs in June. Finally, Nursing & Residential Care Facilities experienced a small decline in employment with the loss of 100 jobs during the month.

Data in this report are not seasonally adjusted. Self-employed persons, including health professionals in private practice, are not included.

Data in Brief

Not Seasonally Adjusted*	Employment, in Thousands				Growth Rate, Annualized		
	June 2022	Mar. 2023	May 2023	June 2023	12 Month	3 Month	1 Month
Virginia							
Total Nonfarm	4,068.1	4,113.6	4,149.9	4,166.9	2.4%	5.3%	5.0%
Health Care & Social Assistance	458.2	470.0	474.5	475.5	3.8%	4.8%	2.6%
Hampton Roads							
Total Nonfarm	791.0	791.0	801.3	807.0	2.0%	8.3%	8.9%
Health Care & Social Assistance	94.4	98.4	100.1	99.6	5.5%	5.0%	-5.8%
Northern Virginia							
Total Nonfarm	1,541.4	1,552.5	1,566.1	1,583.4	2.7%	8.2%	14.1%
Health Care & Social Assistance	146.0	149.4	150.1	152.8	4.7%	9.4%	23.9%
Richmond							
Total Nonfarm	692.7	704.8	711.2	712.6	2.9%	4.5%	2.4%
Health Care & Social Assistance	84.9	86.4	86.8	84.9	0.0%	-6.8%	-23.3%
Rest of Virginia							
Total Nonfarm	1,043.0	1,065.3	1,071.3	1,063.9	2.0%	-0.5%	-7.9%
Health Care & Social Assistance	132.9	135.8	137.5	138.2	4.0%	7.3%	6.3%

Preliminary estimates are italicized

* Seasonally adjusted data are adjusted by the Bureau of Labor Statistics to account for weather and other seasonal changes. Since the U.S. Bureau of Labor Statistics does not provide seasonally adjusted data at this level, this series uses **non**-seasonally adjusted data exclusively. Seasonal variation may account for some of the variation in time series data. When comparing data in this series to other HWDC series or other publications, it is important to note whether the data reported have been seasonally adjusted.

Regional HC&SA Employment Growth, Level

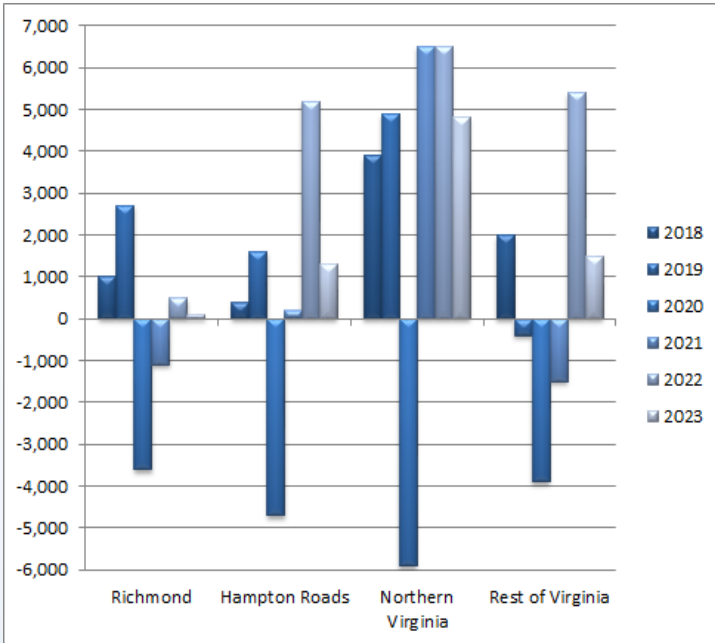


Figure 1: Annual & YTD Change in HC&SA Regional Employment (Not Seasonally Adjusted, Full-Year Change for 2018-2022, Year-to-Date Change for 2023).

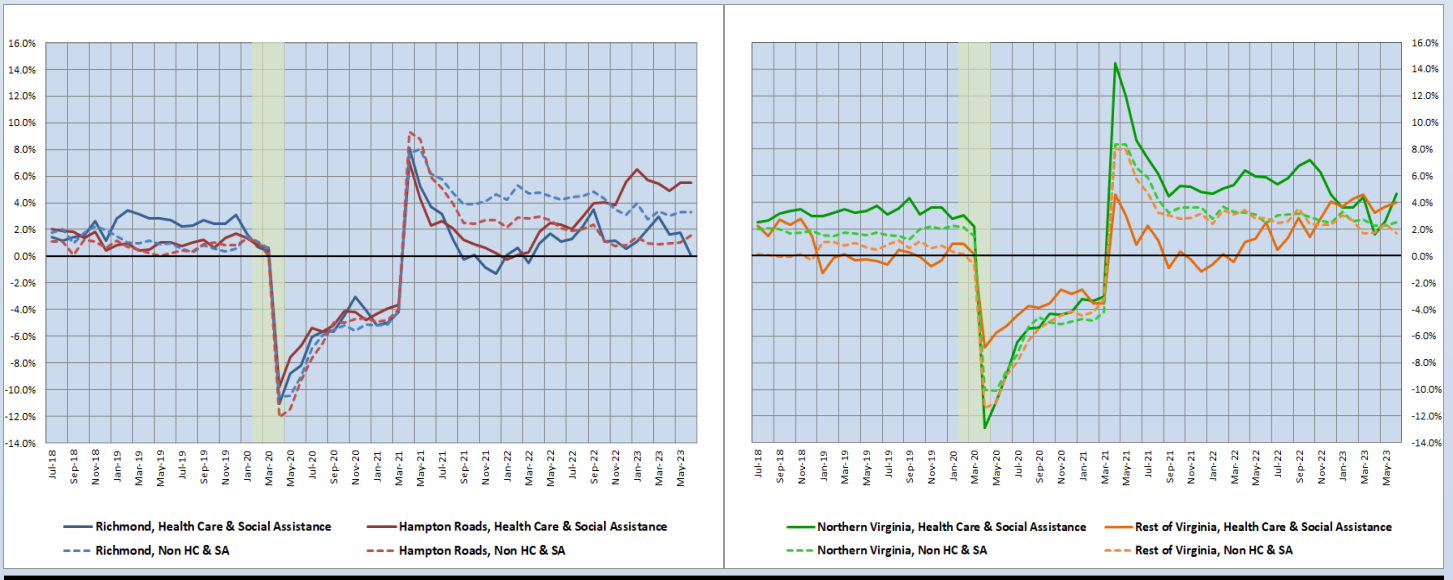
According to the preliminary data released on Friday, July 21, 2023, by the U.S. Department of Labor, Bureau of Labor Statistics, Northern Virginia’s Health Care & Social Assistance (HC&SA) sector enjoyed another month of impressive employment growth. After having created 1,500 jobs in May, Northern Virginia’s HC&SA sector experienced an even stronger month of employment growth in June with the creation of an additional 2,700 jobs. This increase in Northern Virginia’s HC&SA employment represents a one-month annualized growth rate of 23.9%. Even with April’s decline in employment, Northern Virginia still produced 3,400 HC&SA jobs in Q2 2023, which translates into a 9.4% growth rate.

The Rest of Virginia also increased HC&SA employment in June with the creation of 700 new HC&SA jobs during the month. With this gain, the Rest of Virginia has now enjoyed three consecutive months of positive HC&SA job growth, creating a total of 2,400 HC&SA jobs in Q2 2023. As for Richmond and Hampton Roads, these two regions lost 1,900 and 500 HC&SA jobs, respectively, in June.

Year-Over-Year Regional Employment Growth

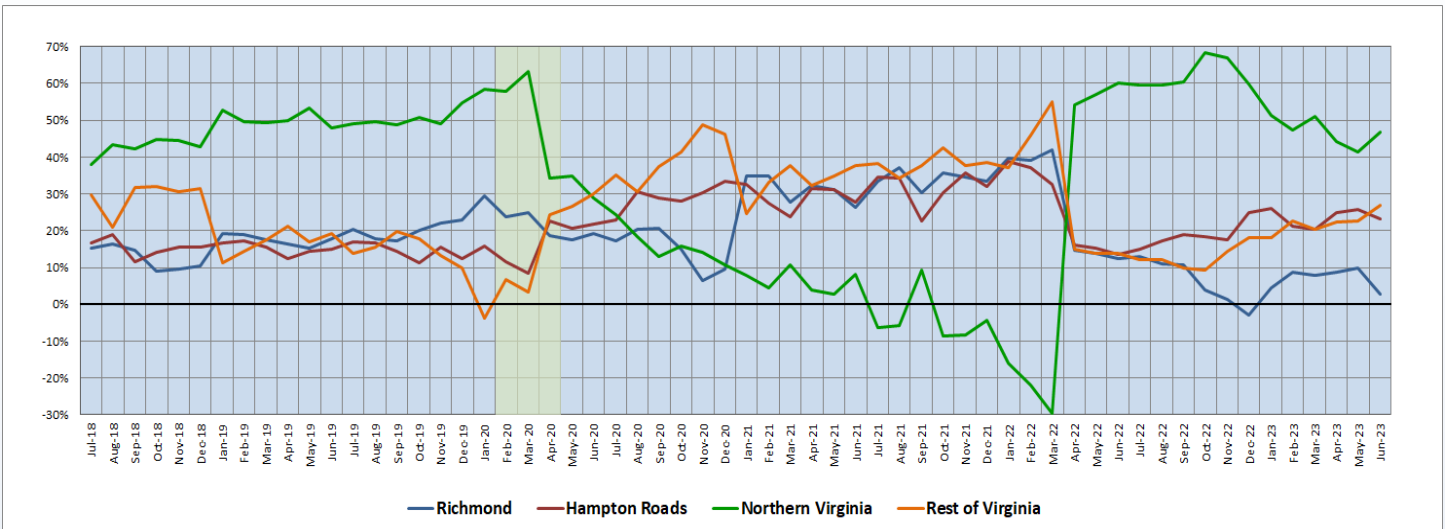
Over the past two months, Northern Virginia’s year-over-year HC&SA employment growth rate has nearly tripled, rising from 1.64% to April to 4.66% in June. Thanks to this dramatic increase, Northern Virginia now has the second-highest year-over-year HC&SA employment growth rate in the state. Only Hampton Roads is currently enjoying faster year-over-year HC&SA employment growth. In fact, its growth rate rose in June from 5.48% to 5.51%. The Rest of Virginia also experienced an increase to its year-over-year HC&SA employment growth rate, which rose from 3.70% to 3.99%. On the other hand, Richmond’s year-over-year HC&SA employment growth rate fell from 1.76% to 0.00% during the month.

Figure 2: Year-Over-Year Employment Growth (Not Seasonally Adjusted).



Regional Share of 24-Month Employment Growth

Figure 3: Regional Share of Previous 24-Month Employment Growth in Virginia’s HC&SA Sector (Not Seasonally Adjusted).



After having fallen from 51.14% to 41.38% over the previous two months, Northern Virginia’s 24-month HC&SA employment growth share rebounded in June with an increase to 46.86%. Although this growth share has been trending downward over the course of the past year, it still remains well above the comparable growth shares of Virginia’s three other regions. Meanwhile, the Rest of Virginia has replaced Hampton Roads as the region with the second-highest 24-month HC&SA employment growth share in the state. Where the Rest of Virginia saw its 24-month HC&SA employment growth share increase from 22.76% to 27.04% in June, Hampton Roads’ growth share fell from 25.86% to 23.27%. Finally, Richmond’s own 24-month HC&SA employment growth share fell from 10.00% to 2.83% in June.

HC&SA Subsector Employment Growth, Level

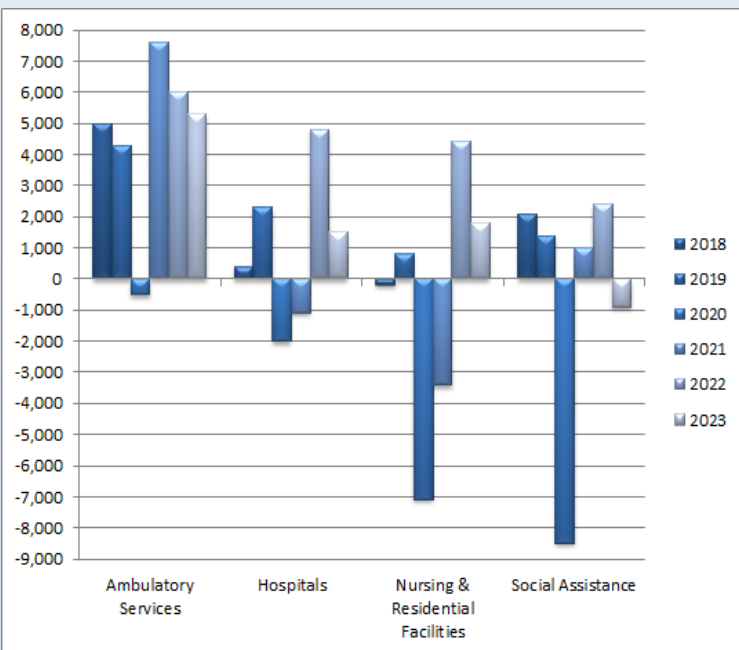


Figure 4: Annual & YTD Change in HC&SA Subsector Employment (Not Seasonally Adjusted, Full-Year Change for 2018-2022, Year-to-Date Change for 2023).

In June, Ambulatory Health Care Services created 1,600 jobs, thereby bringing to a close a very strong quarter of employment growth in this HC&SA subsector. In Q2 2023, Ambulatory Health Care Services increased employment by 5,700. This represents the largest quarterly employment gain in Ambulatory Health Care Services since Q3 2020. Even after accounting for the small decline in employment that occurred in Ambulatory Health Care Services in Q1 2023, this HC&SA subsector has still produced a total of 5,300 jobs so far this year. This year-to-date employment gain is nearly equivalent to the 6,000 jobs created in Ambulatory Health Care Services in all of 2022.

Hospitals also enjoyed positive employment growth in June as this HC&SA subsector increased employment by 900 during the month. This month’s employment gain accounts for nearly all of the 1,000 jobs created in Hospitals in Q2 2023. As for Social Assistance and Nursing & Residential Care Facilities, these two HC&SA subsectors lost 1,400 and 100 jobs, respectively, in June.

Distribution of Growth by Subsector

Not Seasonally Adjusted	Employment, in Thousands				Growth Rate, Annualized		
	June 2022	Mar. 2023	May 2023	June 2023	12 Month	3 Month	1 Month
Virginia							
Health Care & Social Assistance	458.2	470.0	474.5	475.5	3.8%	4.8%	2.6%
<i>Ambulatory Health Care Services</i>	202.6	205.7	209.8	211.4	4.3%	11.6%	9.5%
<i>Hospitals</i>	106.4	110.6	110.7	111.6	4.9%	3.7%	10.2%
<i>Nursing & Residential Care Facilities</i>	69.8	74.3	74.6	74.5	6.7%	1.1%	-1.6%
<i>Social Assistance</i>	79.4	79.4	79.4	78.0	-1.8%	-6.9%	-19.2%
Hampton Roads							
Health Care & Social Assistance	94.4	98.4	100.1	99.6	5.5%	5.0%	-5.8%
<i>Hospitals</i>	21.8	22.5	22.6	22.7	4.1%	3.6%	5.4%
Northern Virginia							
Health Care & Social Assistance	146.0	149.4	150.1	152.8	4.7%	9.4%	23.9%
<i>Ambulatory Health Care Services</i>	75.2	76.2	77.5	80.0	6.4%	21.5%	46.4%
<i>Hospitals</i>	27.4	28.6	28.6	28.7	4.7%	1.4%	4.3%

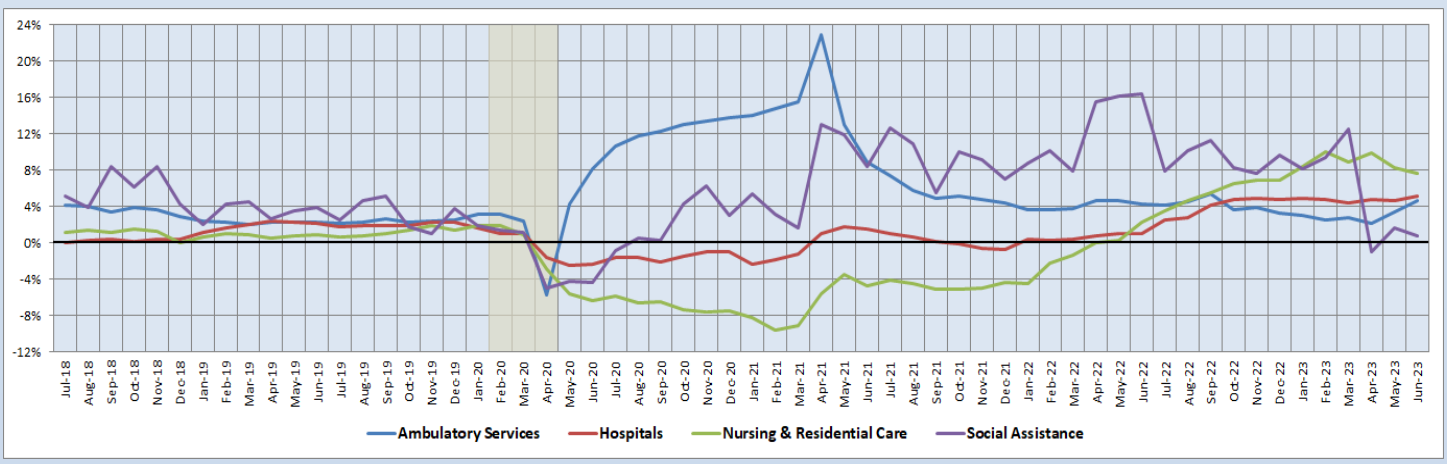
Preliminary estimates are italicized

Both Hospitals and Ambulatory Health Care Services enjoyed strong employment growth in June. Hospitals created jobs at a 10.2% annualized rate in June, while Ambulatory Health Care Services increased employment by 9.5% on an annualized basis during the month. These two HC&SA subsectors have also enjoyed the fastest job growth over the past three months as well. In Q2 2023, Ambulatory Health Care Services and Hospitals had three-month annualized employment growth rates of 11.6% and 3.7%, respectively. Meanwhile, Nursing & Residential Care Facilities are enjoying the fastest long-term job growth in the state thanks to their 12-month employment growth rate of 6.7%.

12-Month Average Employment Growth by Subsector

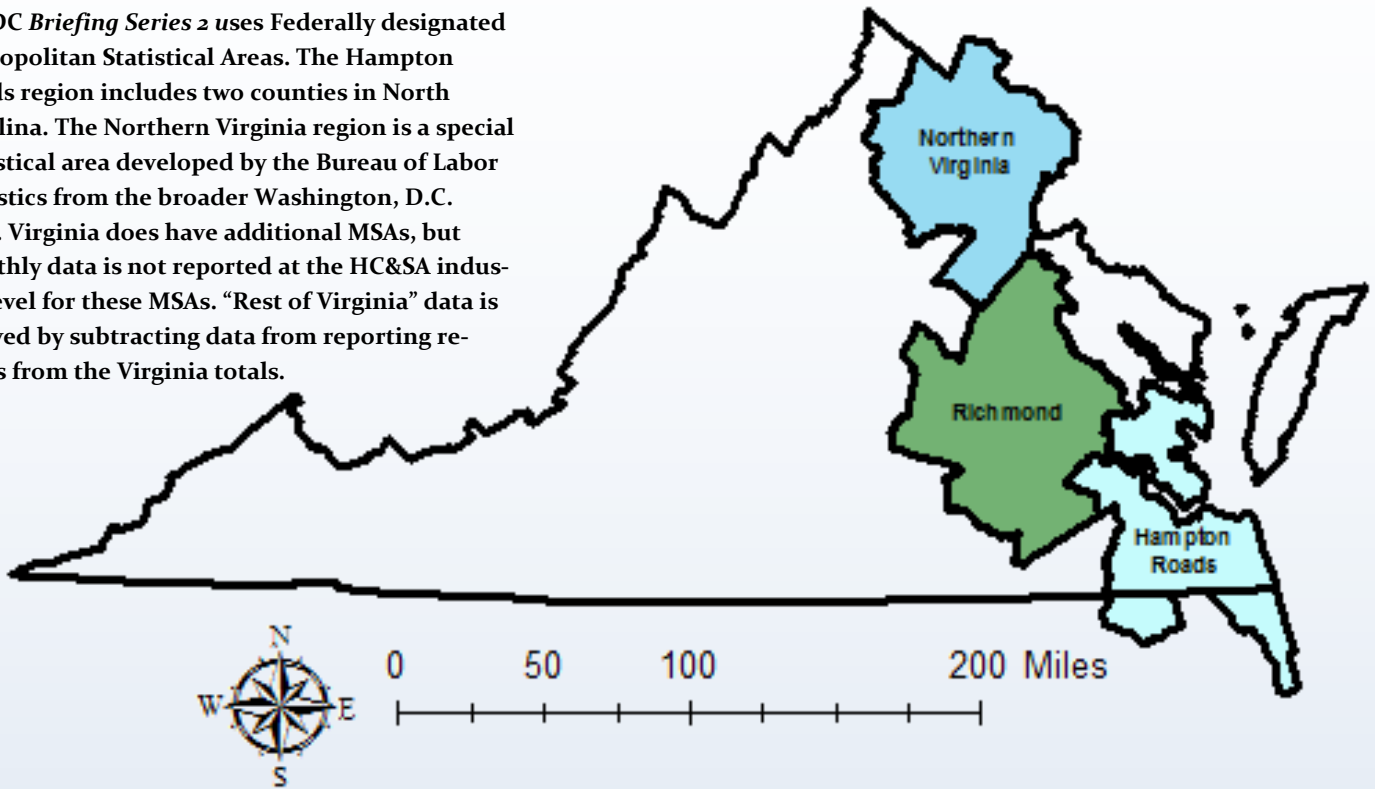
In June, the 12-month employment growth rate moving average of Hospitals increased from 4.61% to 5.08%, thereby reaching a year-to-date high. With this increase, Hospitals’ 12-month employment growth rate moving average now exceeds 5% for the first time since 2008. The 12-month employment growth rate moving average of Ambulatory Health Care Services also reached a new year-to-date high after increasing from 3.42% to 4.69% in June. On the other hand, Nursing & Residential Care Facilities saw their 12-month employment growth rate moving average fall from 8.21% to a new year-to-date low of 7.63%, while Social Assistance experienced a decline to its own moving average from 1.64% to 0.76%.

Figure 5: 12-Month Moving Average, HC&SA Subsector Employment Growth Rate (Not Seasonally Adjusted).



Region Map

HWDC *Briefing Series 2* uses Federally designated Metropolitan Statistical Areas. The Hampton Roads region includes two counties in North Carolina. The Northern Virginia region is a special statistical area developed by the Bureau of Labor Statistics from the broader Washington, D.C. MSA. Virginia does have additional MSAs, but monthly data is not reported at the HC&SA industry level for these MSAs. “Rest of Virginia” data is derived by subtracting data from reporting regions from the Virginia totals.



Region Detail

Northern Virginia		Richmond		Hampton Roads	
<i>Northern Virginia, VA (Non-standard CES Area 94783)</i>		<i>Richmond, VA (MSA 40060)</i>		<i>Virginia Beach-Norfolk-Newport News, VA-NC (MSA 47260)</i>	
Counties:	Cities:	Counties:	Cities:	Counties:	Cities:
Arlington	Alexandria	Amelia	Colonial Heights	Gloucester	Chesapeake
Clarke	Fairfax	Caroline	Hopewell	Isle of Wight	Hampton
Culpeper	Falls Church	Charles City	Petersburg	James City	Newport News
Fairfax	Fredericksburg	Chesterfield	Richmond	Mathews	Norfolk
Fauquier	Manassas	Dinwiddie		Surry	Poquoson
Loudoun	Manassas Park	Goochland		York	Portsmouth
Prince William		Hanover			Suffolk
Rappahannock		Henrico		<i>Currituck, NC</i>	Virginia Beach
Spotsylvania		King William		<i>Gates, NC</i>	Williamsburg
Stafford		New Kent			
Warren		Powhatan			
		Prince George			
		Sussex			

Healthcare Workforce
Data Center

Perimeter Center
9960 Mayland Drive, Suite 300
Henrico, VA 23233-1463

Phone: (804) 597-4213
Fax: (804) 527-4434
E-mail: hwdc@dhp.virginia.gov
Website: www.dhp.virginia.gov/PublicResources/HealthcareWorkforceDataCenter

HWDC Staff:

Yetty Shobo, PhD <i>Director</i>	Barbara Hodgdon, PhD <i>Deputy Director</i>
Rajana Siva, MBA <i>Data Analyst</i>	Christopher Coyle, BA <i>Research Assistant</i>

Follow us on. . .

Tumblr: <http://vahwdc.tumblr.com/>

About the Data

Data in this report are from the U.S. Department of Labor, Bureau of Labor Statistics' Current Employment Statistics program. The CES program surveys about 143,000 businesses and government agencies monthly. Unless otherwise noted, this series uses data that are not seasonally adjusted. Seasonal variations related to weather, holidays, weekends, seasons and other predictable variations are apparent in the data. Short-term changes may be related to seasonal changes rather than underlying trends. Data from recent months are preliminary and subject to revision in future releases from the CES. Revisions will be reported in future editions of this series. Unless otherwise noted, the CES data presented in this series:

Includes:

- ◆ Data on employed individuals drawing a paycheck (payroll employees).
- ◆ All employees, regardless of role, occupation or hours worked.
- ◆ HC&SA employees in the private sector only.
- ◆ Persons employed by health professionals in private practice.
- ◆ Both government and private sector workers in nonfarm employment data.

Does not include:

- ◆ Self-employed workers or volunteers, including health professionals in private practice.
- ◆ HC&SA employees in the public sector (These are counted as government workers in monthly reports).
- ◆ Information on hours worked or the quality of employment.
- ◆ Government workers in HC&SA level data (Government workers, regardless of occupation and role, are classified as public sector employees).

The Department of Health Professions' Healthcare Workforce Data Center works to improve the data collection and measurement of Virginia's healthcare workforce through regular assessment of workforce supply and demand issues among the 80 professions and 350,000 practitioners licensed in Virginia by the DHP.

The HWDC collects data on Virginia's licensed health professionals through surveys completed during the online license renewal and application process. Survey results and data may be accessed on our website: www.dhp.virginia.gov/PublicResources/HealthcareWorkforceDataCenter/.

The HWDC also provides a series of Virginia Healthcare Workforce Briefs based on data collected by the U.S. Department of Labor's Bureau of Labor Statistics and the U.S. Department of Commerce's Bureau of Economic Analysis.

Virginia Healthcare Workforce Briefs:

Series 1: State & National Employment (Monthly)

Series 2: Virginia Regional & Sectoral Employment (Monthly)

Series 3: Income & Compensation (Quarterly)